

HEAD INJURIES ON WARFARIN

One Minute Wonder

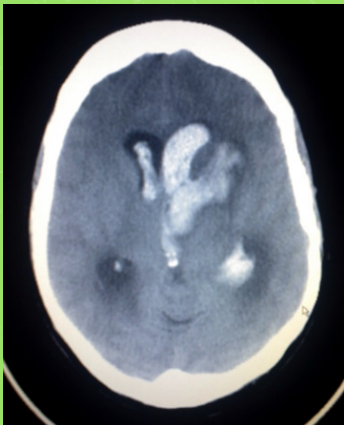
AHEAD Study: an observational study of the management of anticoagulated patients who suffer head injury
[:http://dx.doi.org/10.1136/bmjopen-2016-014324](http://dx.doi.org/10.1136/bmjopen-2016-014324)



Population

Adult patients suffering a head injury whilst on warfarin.

33 sites across England and Scotland



Outcome

Composite primary outcome: 'adverse event rate' (died, neurosurgery, significant abnormality on CT, reattendance within 10 weeks)



Secondary outcomes

The effect of INR, neurological symptoms and signs, and GCS on outcome.



Results

3500 patients enrolled

GCS 15 and no symptoms: Adverse event rate 2.7 (95% CI 2.1-3.6%)

Relative risk of INR in the GCS 15 group 1.11 (95% CI 0.95-1.18)